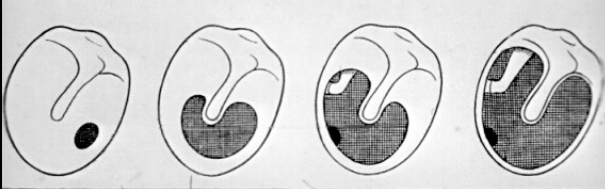
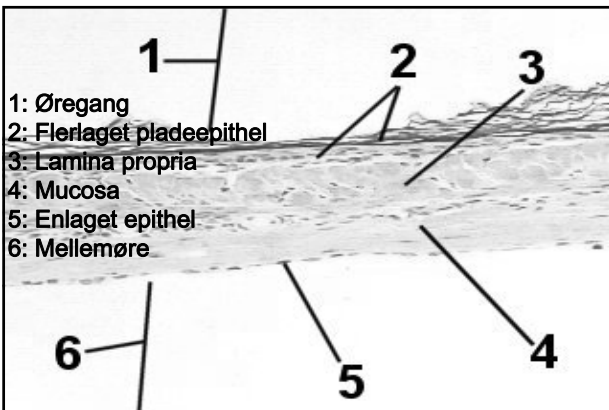


ØREOPERATIONER

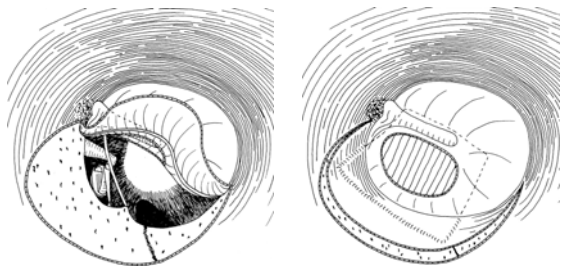
- Myringoplastik (Tympanoplastik type I)





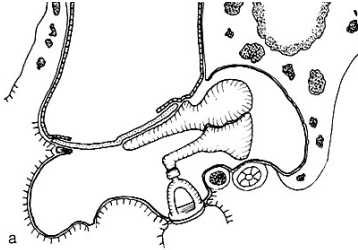
ØREOPERATIONER

- Myringoplastik (Tympanoplastik type I)



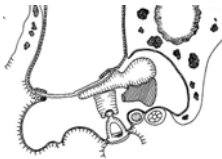
ØREOPERATIONER

- Myringoplastik (Tympanoplastik type I)
 - Med normal knoglekæde!!



ØREOPERATIONER

- Tympanoplastik type II



- Tympanoplastik type III



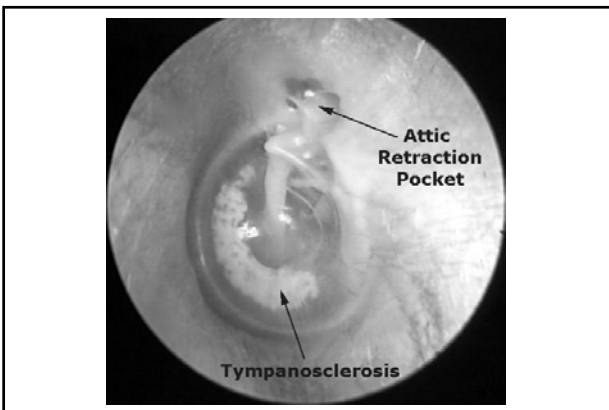
ØREOPERATIONER

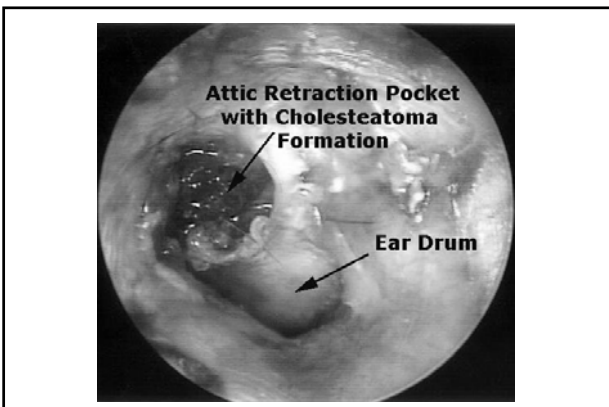
Ved cholestatom og mastoiditis

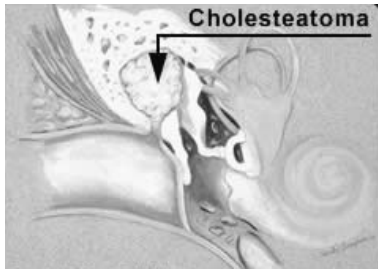
- Mastoidectomi
 - Ofte kombineret med
 - Tympanoplastik type II
 - eller
 - Tympanoplastik type III

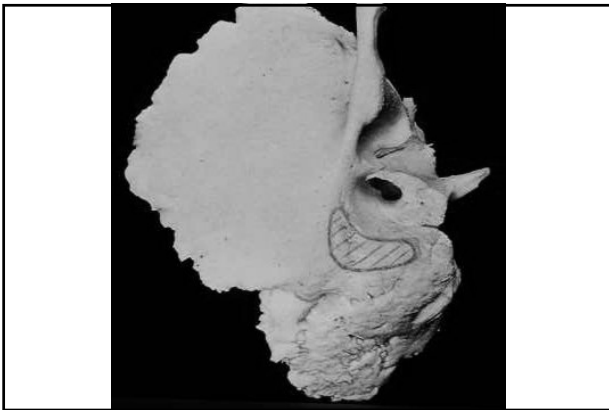
CHOLESTEATOM TEORIER

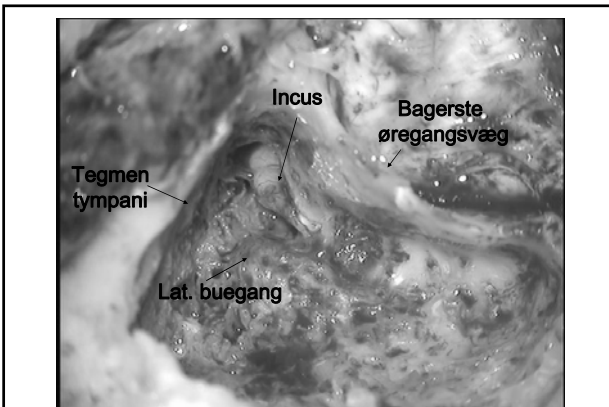
- Kongenit
- Immigration (Habermann 1889)
- Retraktion (Bezold 1891)
- Metaplasi (Ulrich 1917, Sadé 1977)
- Papillær proliferaion (Lange 1925, Rüedi 1958)
- Implantation









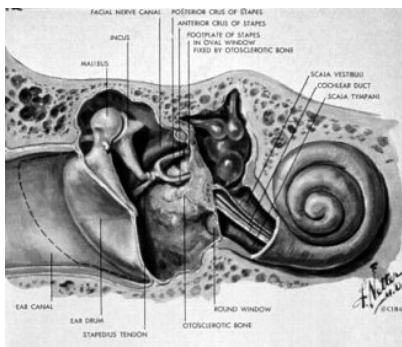


VED RECIDIV-CHOLESTATOM

- Modifieret radikalcavitet
 - altid kombineret med
 - Myringoplastik
 - og
 - Tympanoplastik type II
 - eller
 - Tympanoplastik type III

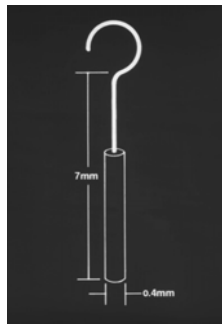
ØREOPERATIONER

- Otosclerose



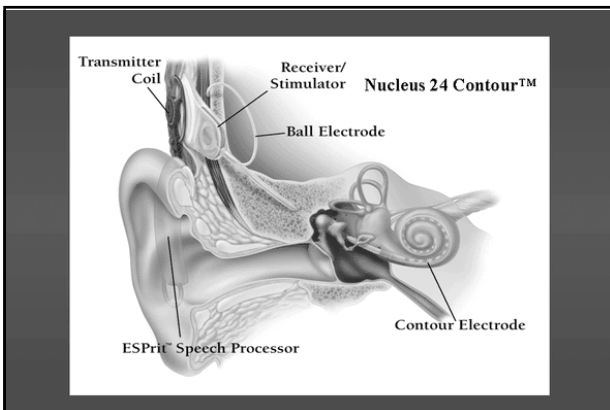
ØREOPERATIONER

- Otosclerose
 - Stapedectomi ad modum Fisch



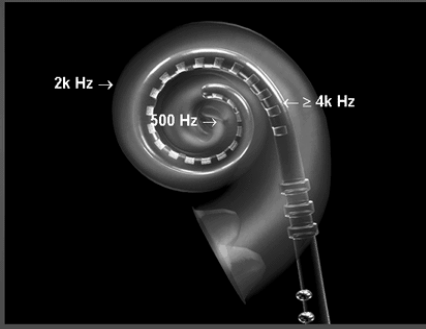
COCHLEAR IMPLANTATION Aktuelle indikationer

- Døvfødte børn
 - Sene operationer ved truende blindhed (Usher)
- Døvblevne børn og voksne
 - Bilateral implantation ved pneumococmeningit
 - Bilateral implantation ved truende blindhed





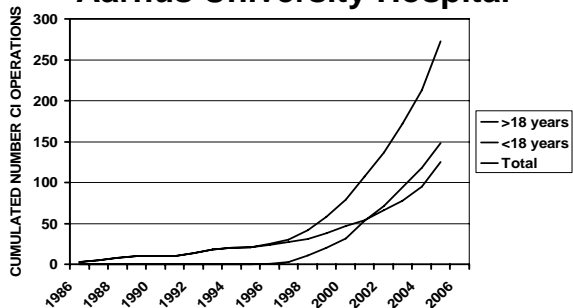
Cochlea Is Tonotopic



TILBEHØR



COCHLEAR IMPLANTATIONS Aarhus University Hospital



NYE UDFORDRINGER

- Neonatal screening



OAE

OtoAcoustic Emissions



AABR

Automated Auditory Brainstem Response
